

# Cambridgeshire County Council Civil Protection Unit



# THE EMERGENCY CENTRE

- Nuclear Bunker built in 1978
- Own generator, water & fuel for 30 days
- ECN Telephone switch
- Helpline facility
- Radiation monitoring system
- Limited stores
- A Resilient Facility



# ROLE OF THE CIVIL PROTECTION UNIT

- Provide strategic overview to the County Chief Executive
- Provide advice on emergency plans
- Training and exercises (Sept 2002)
- Activation of County Emergency Centre
- Manage County intelligence function
- Support District Chief Executives

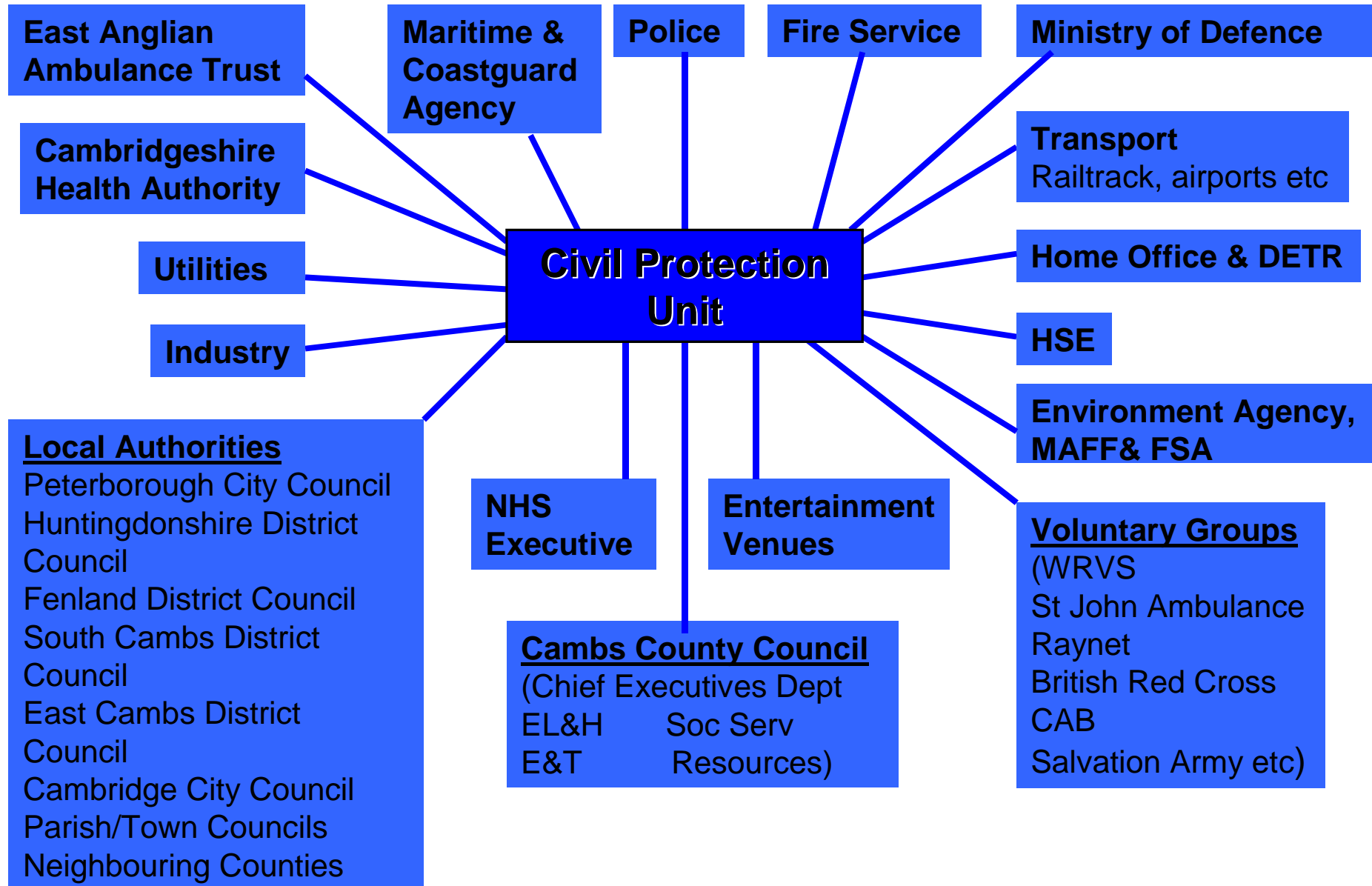
# **OTHER ACTIVITIES TYPICALLY INCLUDE**

- Taking part in Joint Agency Meetings
- Developing a Mass Casualty Plan
- Identifying Temporary Mortuary facilities
- Writing Plans: Fuel, Pipeline, COMAH etc.
- Business Continuity Advice
- Working on Evacuation Plans

# PROVIDING THE LINKS

- Our main role on an ongoing basis is to build and maintain links with:
- District Council's
- Environment Agency (Flooding)
- Any other Group, Individual or Organisation that could be of some assistance.

# Civil Protection Unit Contact Organisations



# WORKING WITH THE STRATEGIC GROUPS

- County Strategic Emergency Forum
- Joint Emergency Services Liaison and Planning Committee (JESLP)
- Regional Resilience Forum



# AT ALL TIMES WE WANT TO:

Ensure that the most effective arrangements are in place to protect the citizens of Cambridgeshire and their property, in the event of a serious emergency incident.

# WHAT IS A DISASTER?

“...any event - happening with or without warning - causing or threatening death or injury, damage to property or to the environment or **disruption to the community**, which because of the scale of its effects **cannot be dealt with** by the emergency services and local authorities as part of their day-to-day activities...”

**In recent years..**

**Flooding has become one of  
our most serious concerns**



# TYPICAL ROLES IN AN INCIDENT

- Communications
- Manpower
- Rest Centres
- Technical advice
- Supplies

# **WE ARE ALERTED & ACTIVATED BY..**

- Receive Flood Fax from Environment Agency
- District Councils and Civil Protection Unit alerted by pager
- Activation of District Emergency Management Team
- Civil Protection Unit ensures activation (Duty Officer system)



# **IN THE EVENT OF A SEVERE FLOOD WARNING WE WOULD**

- Establish Liaison with the Environment Agency Area Incident room
- Establish liaison with Police Incident Officer
- Brief Senior Chief Officer to determine action

# PRIMARY CONCERNS

- Activate the CCC Flood Plan
- Offer close Support to the Emergency Services
- Offer Care & Welfare to those affected, including the operation of emergency rest centres.
- Aid in the restoration of normal conditions



- Assist with the signing of road closures and diversions
- Assist in measures to reduce the effects of flooding on property
- In close collaboration with the Cambridgeshire Health Authority, monitor the health implications for those affected by flooding

# FOR ALL THINGS WE TRY TO:

- Prepare for the unexpected
- Plan for the Risks
- Exercise with our partners &
- Help where we can when the worst happens

And finally...

To us no disaster is a laughing  
matter.

However...

Just to prove that we all live in  
a crazy world.



A photograph of a forest scene. Tall, thin trees with green foliage are visible. Sunlight filters through the canopy, creating a bright, hazy atmosphere. The scene is reflected in a calm body of water in the foreground. The text "Thank You For Your Attention" is overlaid in the center in a red, italicized font.

*Thank You For Your  
Attention*